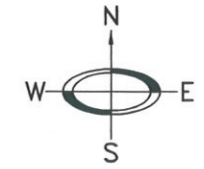
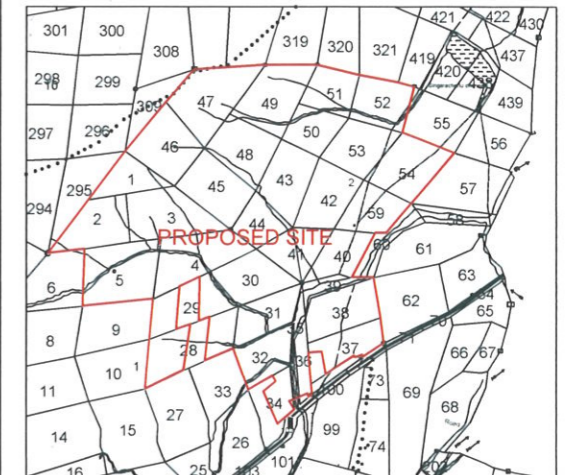


FILE NO:



VILLAGE MAP OF R-ANANTAPURAMU VILLAGE

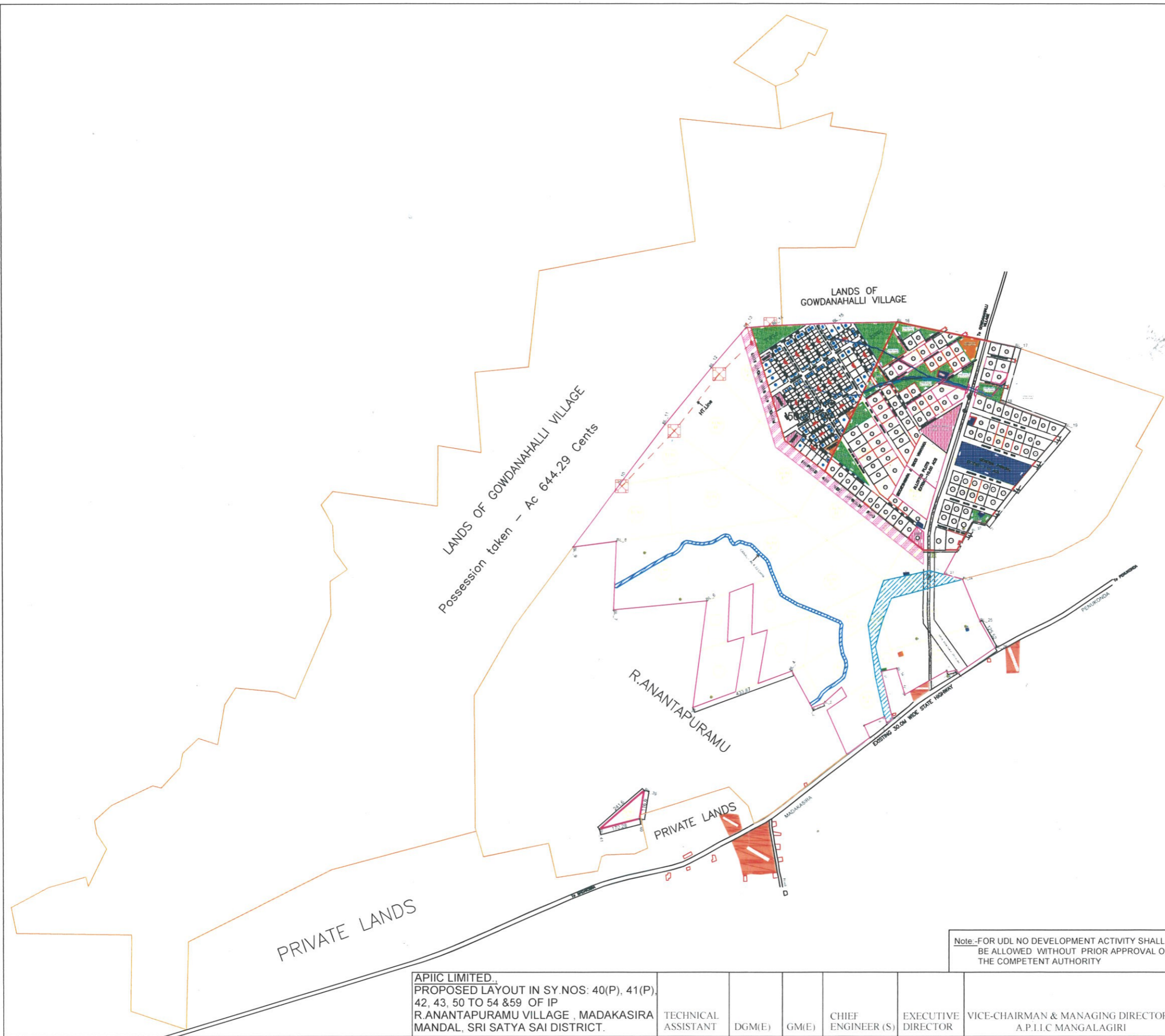
SCALE: Not to scale, SITE U/R



REFERENCE:

- MSME LAYOUT BOUNDARY :
- PROPOSED IP LAYOUT BOUNDARY :
- OPEN SPACE / BUFFER :
- VAGU/VANKA :
- ELECTRICAL LINE :
- HI-TENTION LINE :
- DIVERSION OF EXISTING STREAM :
- STREAM (ON GROUND) :
- AMENITY :
- UTILITY :

| | |
|---|---------------------------|
| PROPOSED IP LAYOUT (AS ON GROUND) | : Ac 135.06 Cents |
| LANDS NOT IN POSSESSION (40/1, 52/3, 53/10, 59/6) | : Ac 0.68 Cents |
| NET LAYOUT AREA | : Ac 134.38 Cents (100%) |
| OPEN SPACE | : Ac 28.22 Cents (21.00%) |
| OPEN SPACE | : Ac 14.30 Cents (10.64%) |
| 2 METERS BUFFER | : Ac 0.33 Cents (00.25%) |
| AMENITY (SALEABLE) | : Ac 4.60 Cents (03.42%) |
| UTILITY (NON-SALEABLE) | : Ac 1.34 Cents (01.00%) |
| GENERAL PARKING | : Ac 7.10 Cents (05.28%) |
| CANAL AREA | : Ac 1.13 Cents (00.84%) |
| PLOTTED AREA | : Ac 77.36 Cents (57.57%) |
| NO. OF PLOTS | : 115 |



Note:-FOR UDL NO DEVELOPMENT ACTIVITY SHALL BE ALLOWED WITHOUT PRIOR APPROVAL OF THE COMPETENT AUTHORITY

| | | | | | | |
|--|---------------------|--------|-------|--------------------|--------------------|--|
| APIIC LIMITED, PROPOSED LAYOUT IN SY.NOS: 40(P), 41(P), 42, 43, 50 TO 54 & 59 OF IP R-ANANTAPURAMU VILLAGE, MADAKASIRA MANDAL, SRI SATYA SAI DISTRICT. | TECHNICAL ASSISTANT | DGM(E) | GM(E) | CHIEF ENGINEER (S) | EXECUTIVE DIRECTOR | VICE-CHAIRMAN & MANAGING DIRECTOR A.P.I.L.C MANGALAGIRI |
|--|---------------------|--------|-------|--------------------|--------------------|--|

Handwritten signatures and dates:
 PE(E) 23/9
 Dgm(E) 23/9
 TPO 23/9
 GM(E) 23/9
 CE-II 23/9