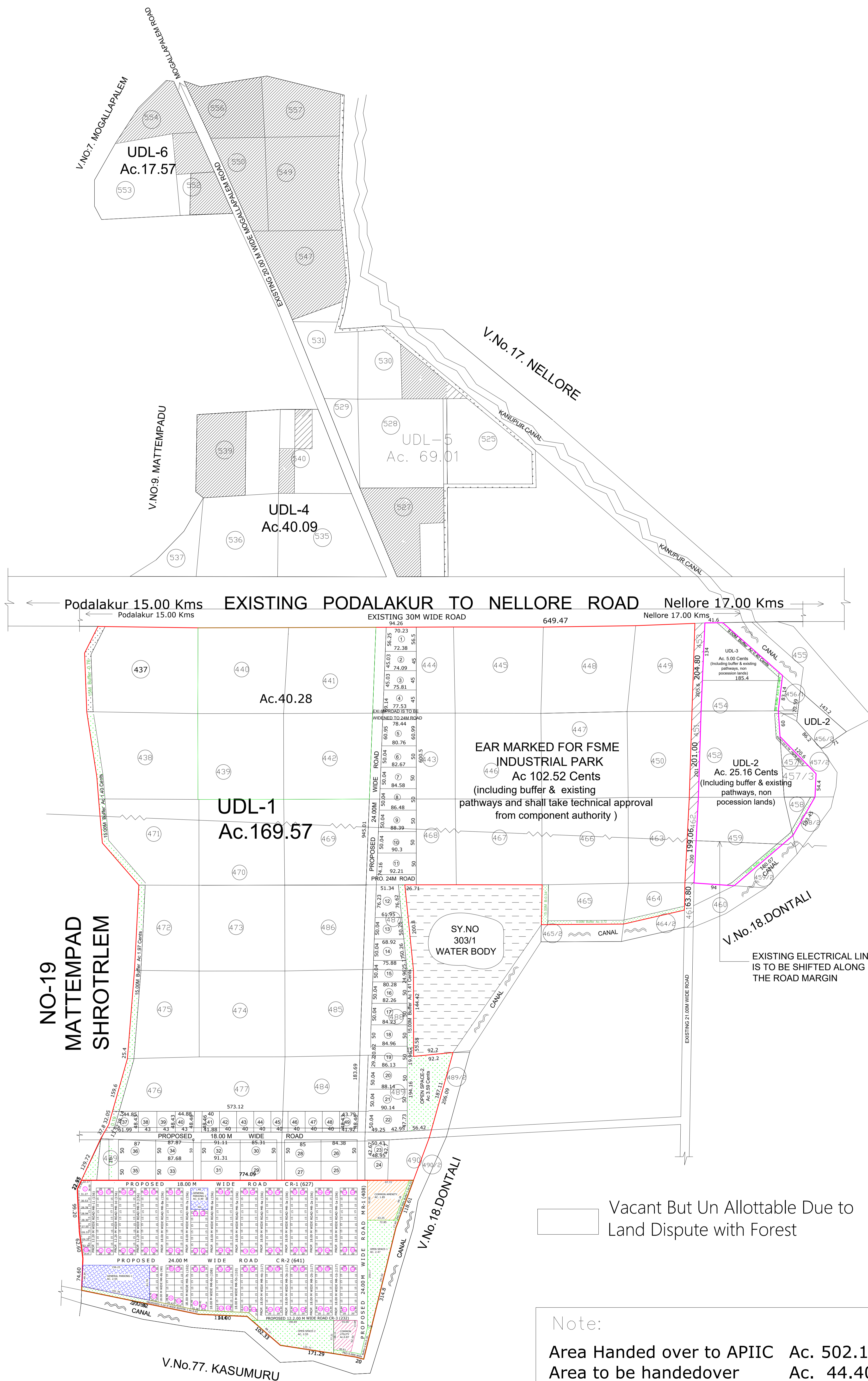
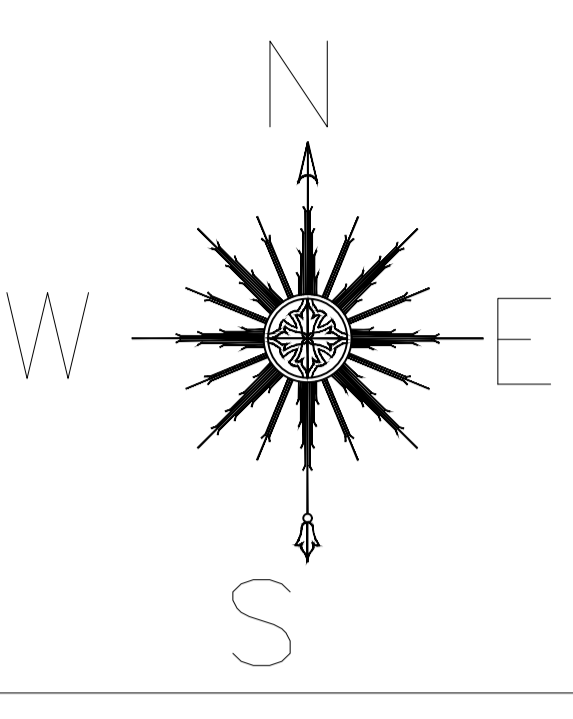
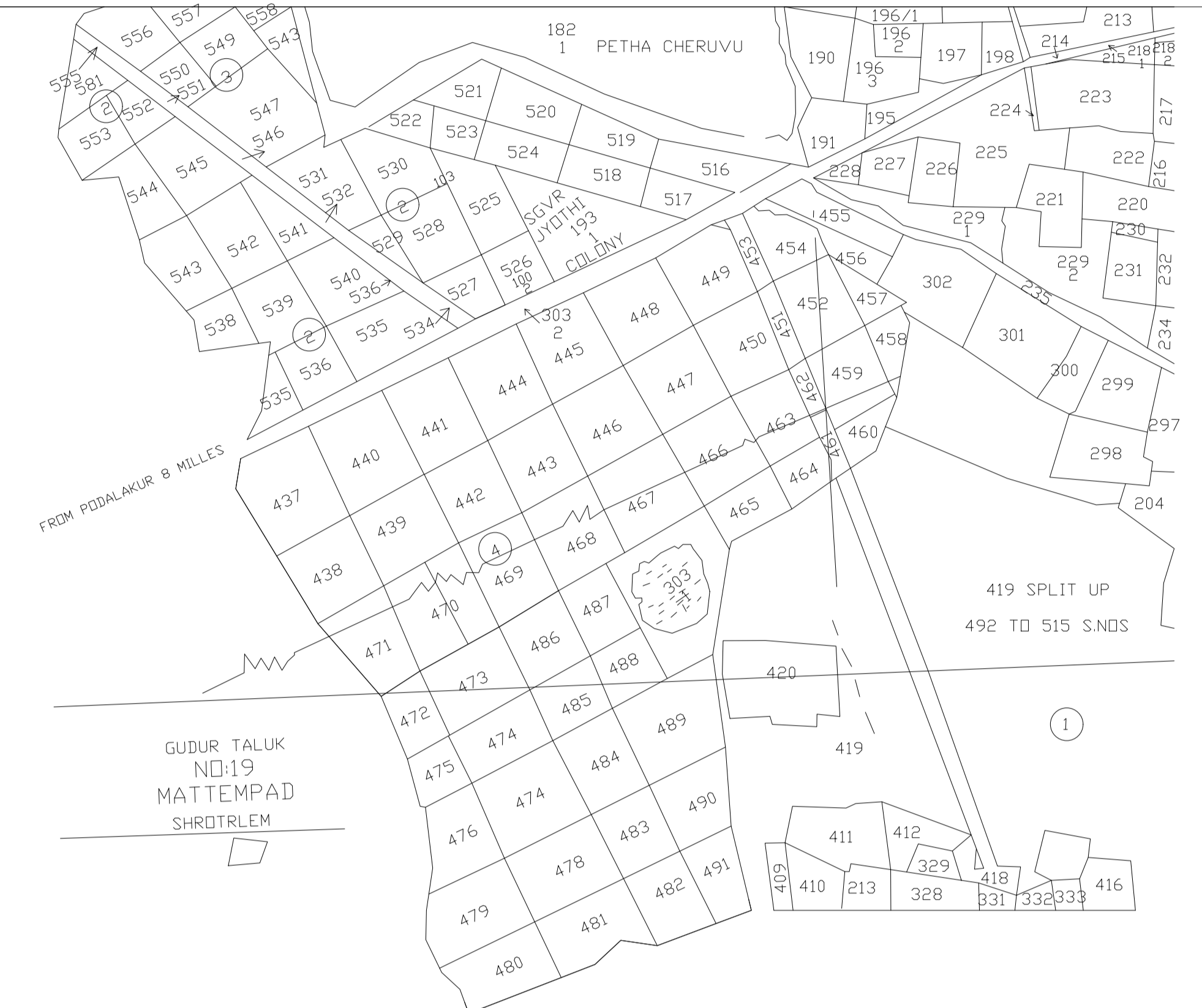


PROPOSED PLAN OF INDUSTRIAL PARK AT AMANCHARLA NELLORE MANDAL, SPSR NELLORE DISTRICT.



EXTRACT OF AMANCHERLA VILLAGE MAP
SCALE: 1 = 8000 M SITE U/R



REFERENCE:

PROPOSED PLASTIC PARK	:	
PROPOSED SURVEY BOUNDARY	:	
PROPOSED ROADS	:	
EXISTING ROADS	:	
OPEN SPACE / BUFFER	:	
CANAL	:	
AREA TO BE HANDEDOVER	:	

Area Analysis

Total Layout Area	Ac. 546.52
UDL-1	Ac. 169.57
UDL-2	Ac. 25.16
UDL-3	Ac. 5.00
UDL-4	Ac. 40.09
UDL-5	Ac. 69.01
UDL-6	Ac. 17.57
MSME	Ac. 59.54
FSME	Ac. 102.52
IP Amancharla	Ac. 59.17

APIIC Ltd., VIJAYAWADA,

PROPOSED INDUSTRIAL PARK LAYOUT IN SY.NOS. 437 TO 450, 452, 454, 456 TO 459, 463 TO 491, 525 TO 531, 535 TO 540, 549 TO 550, 552 TO 554, 556 & 557 OF AMANCHERLA VILLAGE, NELLORE MANDAL, NELLORE DISTRICT.

Note:
Area Handed over to APIIC Ac. 502.12
Area to be handedover Ac. 44.40