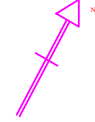


L.P.NO.20/91/VGT UDA  
FILE NO C3 - 7643/89

THIS REVISES THE L.P.NO 73/84 VGTUDA



**LEGEND :**

BOUNDARY OF THE LAYOUT	
TOTAL AREA	
TOTAL NO. OF PLOTS	
% OF OPEN SPACE	15.58%
EXISTING ROADS	
PROPOSED ROADS	
EXISTING SHEDS (A.P.)I.C.LTD	
PLOT SIXES	

PROPOSED SUB DIVISION OF PLOTS		FOR NOS SCS		
30MX54M	1m	1m	4.50m	12
27MX54M	1m	6m	4.50m	7
30MX45M	-	-	-	6
48MX45M	-	-	-	1
45X42M	-	-	-	1
45MX45M	-	-	-	1
45MX33M	-	-	-	1
27MX52M	-	-	-	1
27MX33M	-	-	-	1
45MX68M	4.5	4.5	3.0	1
42MX75M	1.5	5.0	3.0	1

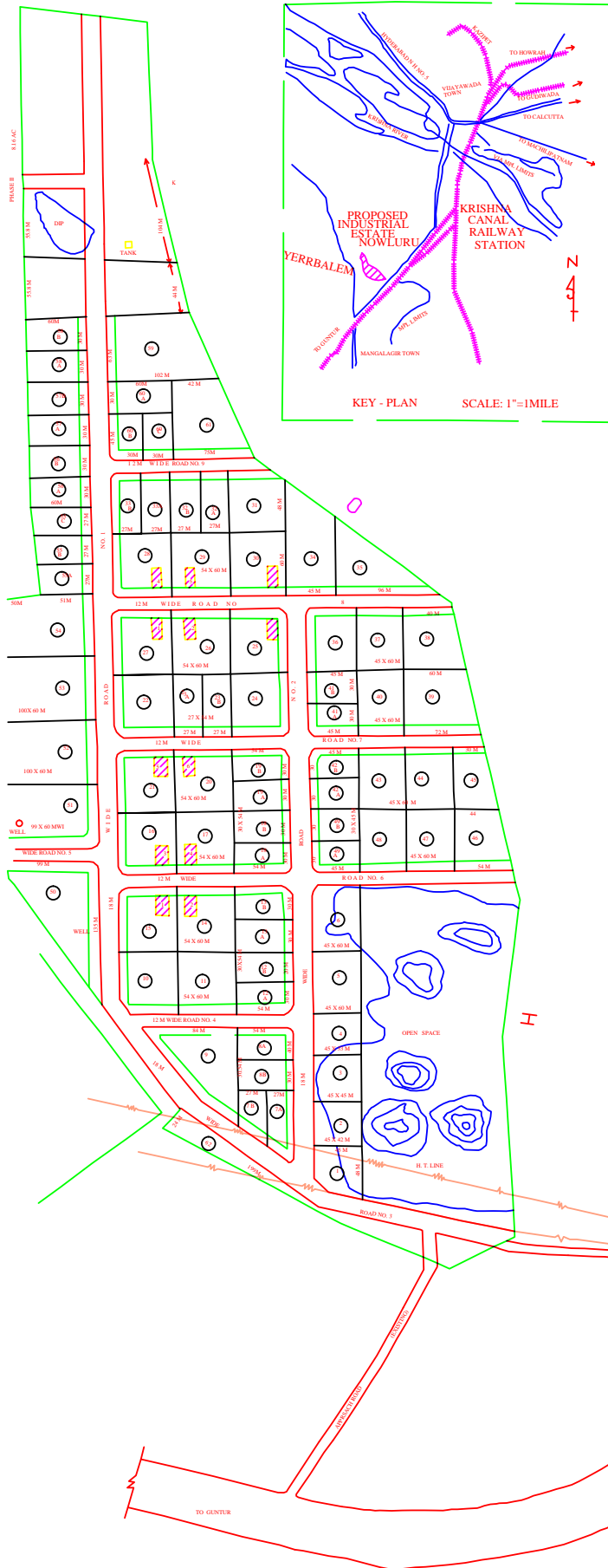
A.P.I.C. LTD

SCALE : 1CM 15M

REVISED LAYOUT PLAN OF INDUST RIAL

COMPLEX, NOWLURU,

GUNTUR DISTRICT



KEY - PLAN SCALE: 1"=1MILE