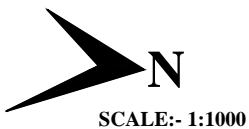
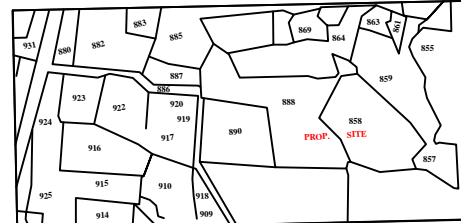


EXTRACT OF NUZVID VILLAGE MAP  
SCALE:- 1" = 660'0"



Sd/- 29-06-2013  
VC & MD

# A.P.I.I.C LTD HYDERABAD

## NUZVID MUNICIPALITY

REVISED LAY OUT IN SY.NOS.858 AND 888 (PART) FOR INDUSTRIAL PARK IN NUZVID VILLAGE KRISHNA DISTRICT

### LAND USE ANALYSIS

LAYOUT BOUNDARY		
EXISTING ROADS		
PROPOSED ROADS		
LAYOUT AREA	ACS 36.82	100.00 %
PLOTTED AREA	ACS 21.46	58.28%
OPEN SPACE	ACS 3.73	10.13 %
ROADS AREA	ACS 11.63	31.59 %
NO'S OF PLOTS	240	(INCLUDING BE-NUMBERS)

MANAGER/E	CHIEF GENERAL MANAGER/E A.P.I.I.C LTD, HYD.
DY.GENERAL MANAGER/E	CHIEF ENGINEER-II A.P.I.I.C LTD, HYD.

© Created by TNS, 02-03-2013 10:45 AM, L1000.dwg