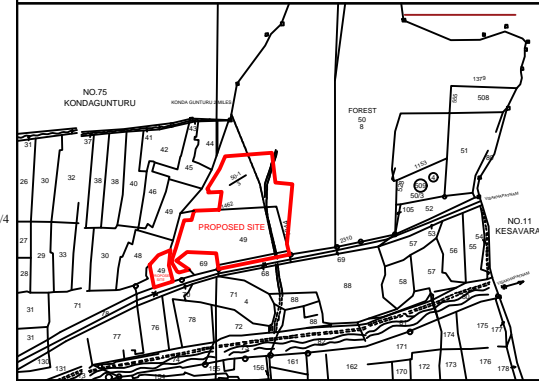




REVISED T.L.P.NO. 26 /2018/GUDA

EXTRACT OF JEGURUPADU VILLAGE MAP
 SCALE: 1 = 8000 M SITE U/R

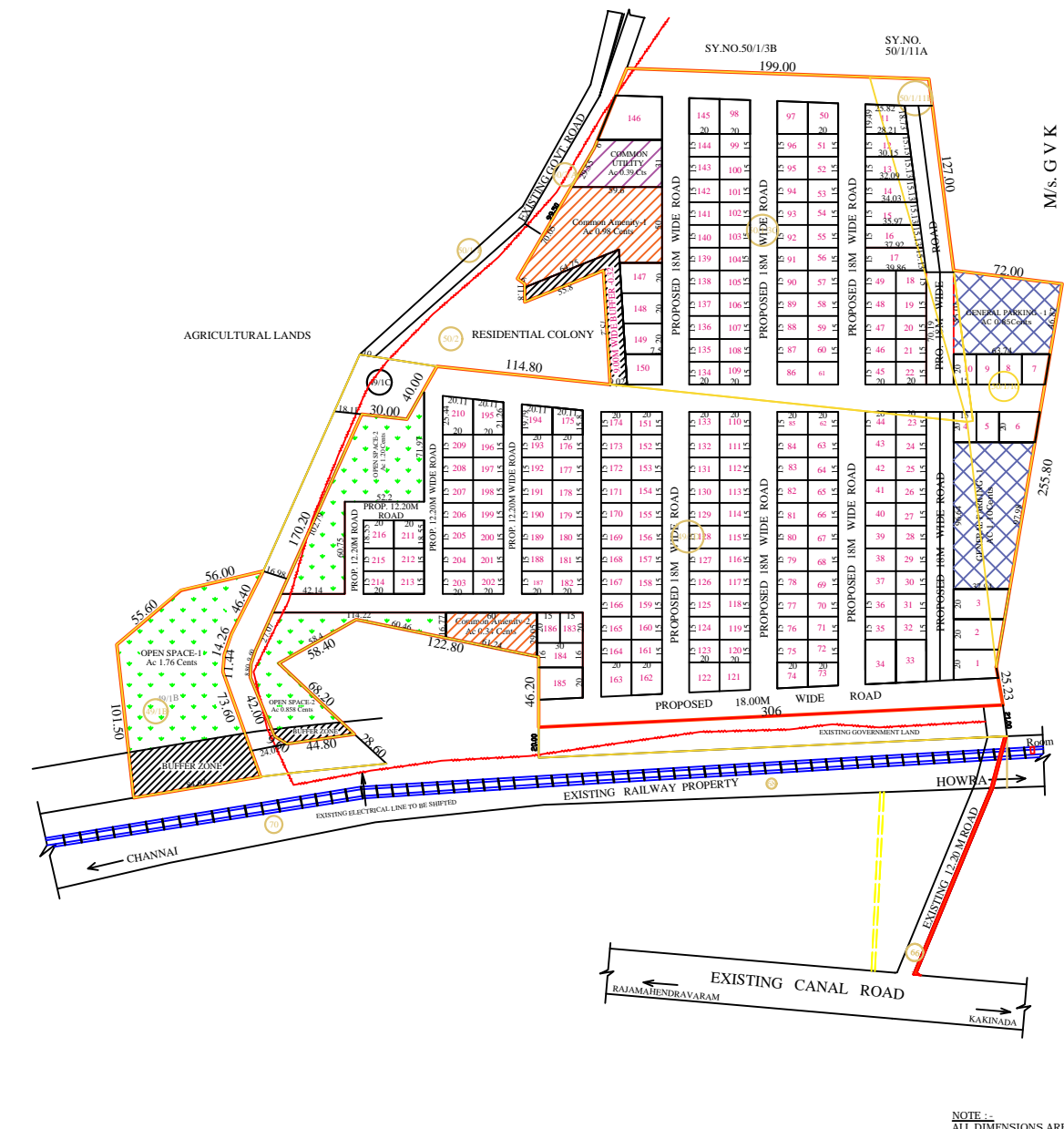


REFERENCE:

- PROPOSED LAYOUT BOUNDARY :
- PROPOSED SURVEY BOUNDARY :
- PROPOSED ROADS :
- EXISTING ROADS :
- OPEN SPACE/BUFFER :
- COMMON AMENITY (Saleable) :
- COMMON UTILITY (Non-Saleable) :
- GENERAL PARKING :
- EXISTING ELECTRICAL LINES :

LAND USE ANALYSIS:-

- TOTAL LAY OUT AREA : Ac 38.67 Cents.
- A) ROAD AREA (32.76%) : Ac 12.67 Cents
- B) GENERAL PARKING (05.04%) : Ac 01.95 Cents
- C) RECREATIONAL:- (11.04%)
 - i).OPEN SPACE (9.85%) : Ac 03.81 Cents
 - ii).9.00M BUFFER (00.83%) : Ac 0.32 Cents
 - ii).30.0M BUFFER (01.84%) : Ac 0.71 Cents
- D) COMMON FACILITY:- (04.42%)
 - i). COMMON AMENITY (Saleable) (03.41%) : Ac 01.32 Cents
 - ii). COMMON UTILITY (Non-Saleable) (01.01%) : Ac 0.39 Cents
- E) PLOTTED AREA AREA (48.67%) : Ac 18.82 Cents
- NUMBER OF PLOTS : 216



NOTE :-
 ALL DIMENSIONS ARE IN METERS

JEGURUPADU GRAMPANCHAYAT

PLAN SHOWING THE INDUSTRIAL TENTATIVE LAY OUT FOR MSME PARK IN INDUSTRIAL PARK IN R.S NO.49 / 1B,1D & 50-1/3C,10,11B OF JEGURUPADU VILLAGE; KADIYAM MANDAL; EAST GODAVARI DISTRICT:

SCALE: 1: 2000

Sd/-
 ASSISTANT PLANNING OFFICER

Sd/-
 A.A.D.

Sd/-
 CHIEF PLANNING OFFICER

Sd/- 23.11.2018
 VICE - CHAIRMAN
 GODAVARI URBAN DEVELOPMENT AUTHORITY
 KAKINADA