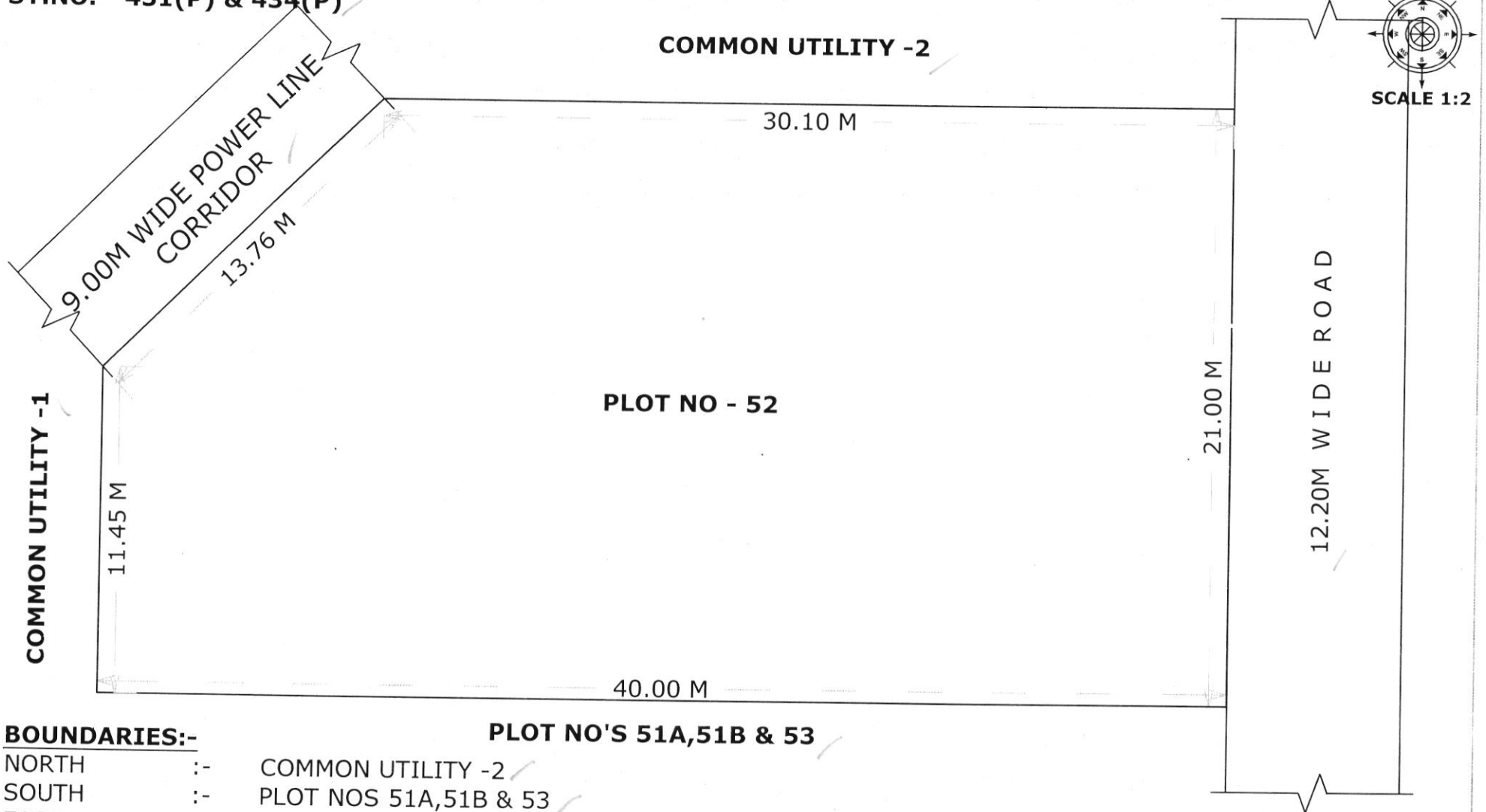


SITE PLAN OF PLOT NO - 52, MSME PARK, PEDDA URAM E.G. DIST.,

PLOT AREA :- 792.72 SQM  
SY.NO. 431(P) & 434(P)



**BOUNDARIES:-**

NORTH :- COMMON UTILITY -2  
SOUTH :- PLOT NOS 51A,51B & 53  
EAST :- 12.20M WIDE ROAD  
WEST :- 9.00M WIDE POWER LINE CORRIDOR & COMMON UTILITY -1

NOTE :- THIS SITE PLAN IS SUBMITTED SUBJECT TO APPROVAL OF LAYOUT PLAN BY GUDA, KAKINADA

*[Signature]*  
19/10/19  
Project Engineer  
APIIC Limited, Kakinada

*[Signature]*  
19/10/19  
DY. ZONAL MANAGER(E)  
APIIC Limited, Kakinada